

ErgocareBank

ERGONOMIC SOLUTIONS: THE ERGO CARE BANK

Kay Wilson

**B.App. Sci. Grad Dip Ergonomics
IPSOTEC AB**

Swedish Home Care and Nursing Homes



- 1.9 mill Swedes are over 65 years old



Swedish Home Care and Nursing Home Care



- 400,000 take care of an elderly relative



Swedish Home Care and Nursing Home Care



- Aged Care Assessor: makes decision on
 - Type of care
 - Level of care



Swedish Home Care and Nursing Home Care



- Private and Council-run Home Care
- Client's choice of provider



www.shutterstock.com - 189646979

Swedish Home Care and Nursing Home Care



- Allocation of services and time allowed varies between councils
- Very topical issue at the moment



Swedish Home Care and Nursing Home Care

Work Environment Act



Arbetsmiljölagen AFS

Fysisk arbetsmiljö

- Luft
- Rum
- Ljus
- Buller
- Maskiner/redskap/möbler
- Arbetsstyngd/arbetsteknik

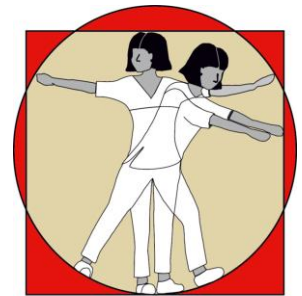
Psykisk arbetsmiljö

- Kränkande särbehandling i arbetsliv
- Arbetsanpassning och rehabilitering



Swedish Home Care and Nursing Home Care

Identify, Fix, Follow-up



ErgocareBank

Systematiskt arbetsmiljöarbete

Arbetsgivarens arbete med att...



...verksamheten på ett sådant sätt att ohälsa och olycksfall förebyggs och att en tillfredsställande arbetsmiljö uppnås.

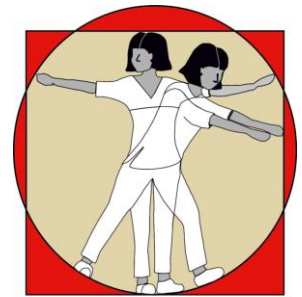
Swedish Home Care and Nursing Home Care



Transport time



Swedish Home Care and Nursing Home Care



ErgocareBank

Manual handling training not always the answer



Swedish Home Care and Nursing Home Care



Swedish Home Care and Nursing Home Care

Solutions to Manual Handlding tasks



Swedish Home Care and Nursing Home Care



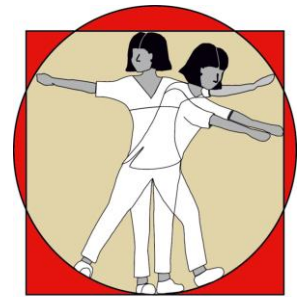
Swedish Home Care and Nursing Home Care



Swedish Home Care and Nursing Home Care



Swedish Home Care and Nursing Home Care

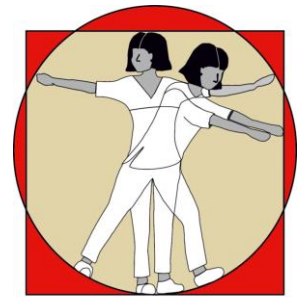


ErgocareBank

So many different tasks and environments and
equipment



Swedish Home Care and Nursing Home Care



ErgocareBank

The screenshot shows a web browser window with the address bar displaying "ergocarebank.sth.kth.se". The website header includes the ErgocareBank logo and a navigation menu with the following items: Home, Equipment, Ergonomic solutions, Scientific specialists, Risk assessment, and Contact. A search bar is located to the right of the navigation menu.


The Ergonomic Databank for Social and Health Care

The importance of ergonomics in social welfare and healthcare is well recognized in Europe. There is a growing awareness of the need to apply solutions in the workplace in order to improve working conditions, reduce work-related accidents and improve staff's wellbeing; practical solutions based upon sound ergonomics.

These methods should reduce the risk for musculoskeletal disorders and accidents when working with clients as well as supporting the client in maintaining their functional ability as long as possible.

A consortium of partners from Finland, Greece, Sweden and Estonia are working together to define the problems of the nursing and care work methods used when assisting clients with their ADL. Proposed solutions will be registered in the [ErgocareBank](#).

The [ErgocareBank](#) will present techniques according to safe patient handling guidelines for both educational facilities and workplaces and these will be made available for students, teachers and workers.

 Lifelong Learning Programme

NEWS 2015-04-21

[Greece Conference Program, Kefalonia, 17th - 18th, September 2015](#)

[Ergonomika - hooldustöö võti! Abivahendid ja tööõpped](#)